

Training for Members

# Federation Schools and Education



# FEDERATION SCHOOLS – BUILDING A UNION OF ACTIVISTS

**Want to get to know Usdaw members from different workplaces and branches? Would you like to get together with them to learn more about how your Union works and how you can get more involved? And to tackle the issues affecting you at work and in the wider community? You can do all these things – and have fun at the same time – by attending your local Federation School.**

## **What is a Federation?**

A Federation is an organisation made up of Usdaw branches that are within a reasonable distance of each other.

Any branch has the right to affiliate to a Federation and take part in Federation affairs.

They are democratic bodies, run for members by members through an elected Federation Committee.

The key aim of Federations is to encourage as many members as possible to play an active role in Usdaw. This is important because they need not only to recruit new members, but to retain them by helping them maintain an active interest in the Union once they have joined.

Federations, therefore, play a vital part in:

- The social life of the Union.
- Developing membership education.
- Building the Union.

“ Two of the reports were given by people attending the Weekend School for the first time and because of the relaxed, informal atmosphere were able to give excellent reports. ”

“ THE SCHOOL RAN PERFECTLY WITH EVERY DELEGATE FEELING COMFORTABLE AND WELCOME. ”

“ The evening meal was excellent. We then went to a local bar which had live entertainment. All delegates enjoyed themselves and many made new friends. ”

### Informal and friendly

Federation Schools are relaxed and informal – you’ll have plenty of chances to get involved and express your own views.

The Schools are lively and friendly events covering work issues and the workings of the Union – such as understanding the Annual Delegate Meeting, and Usdaw’s relationship with the Labour Party.

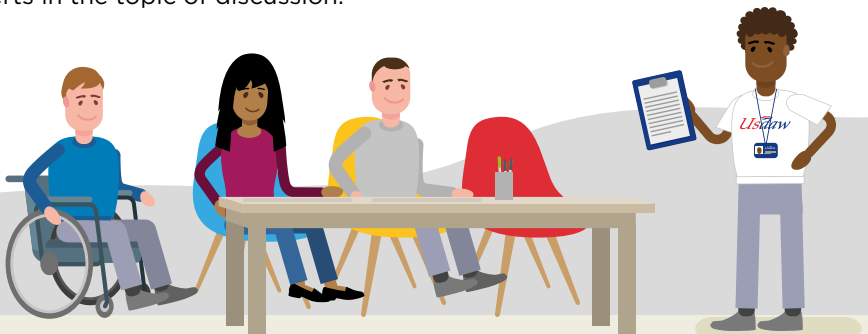
Most Federations organise two or three Schools a year and they are usually social as well as informative occasions. The Schools are often led by Usdaw officials who are experts in the topic of discussion.

### Affiliate to a Federation now!

Ushaw is only as strong as its members. It is your Union and if you want to play an active part in it then a Federation School is a good place to be.

- Make sure your branch is affiliated to the local Federation. If it isn’t, raise the matter with your Usdaw Rep/Branch Secretary/Area Organiser.

“ The format of workgroups and report-backs was enjoyable and generated a wide and varied discussion on the subject. ”



“ I WOULD RECOMMEND TO ANYONE THE BENEFITS OF GOING TO FEDERATION SCHOOLS. ”



*Usdaw*  
Education

## START YOUR FEDERATION JOURNEY NOW

Contact your Area Organiser or get in touch with your Training Officer, via your Divisional office, or Usdaw's Training and Education Department:

### **South Wales and Western**

Cardiff Office

Tel: 029 2073 1131

email: [cardiff@usdaw.org.uk](mailto:cardiff@usdaw.org.uk)

### **Eastern**

Waltham Cross Office

Tel: 01992 709280

email: [walthamx@usdaw.org.uk](mailto:walthamx@usdaw.org.uk)

### **Midlands**

Redditch Office

Tel: 01527 406290

email: [redditch@usdaw.org.uk](mailto:redditch@usdaw.org.uk)

### **North Eastern**

Leeds Office

Tel: 0113 232 1320

email: [leeds@usdaw.org.uk](mailto:leeds@usdaw.org.uk)

### **Scottish**

Glasgow Office

Tel: 0141 427 6561

email: [glasgow@usdaw.org.uk](mailto:glasgow@usdaw.org.uk)

### **Southern**

Morden Office

Tel: 020 8687 5950

email: [morden@usdaw.org.uk](mailto:morden@usdaw.org.uk)

### **North West**

Warrington Office

Tel: 01925 578050

email: [warrington@usdaw.org.uk](mailto:warrington@usdaw.org.uk)

**For further information, contact:**

### **Education Department**

Usdaw

188 Wilmslow Road

Manchester M14 6LJ

**Call:** 0161 224 2804/249 2400

**email:** [education@usdaw.org.uk](mailto:education@usdaw.org.uk)

**Web:** [www.usdaw.org.uk/training](http://www.usdaw.org.uk/training)

*Usdaw*  
*Union of Shop, Distributive  
and Allied Workers*

October 2018

Lft 297